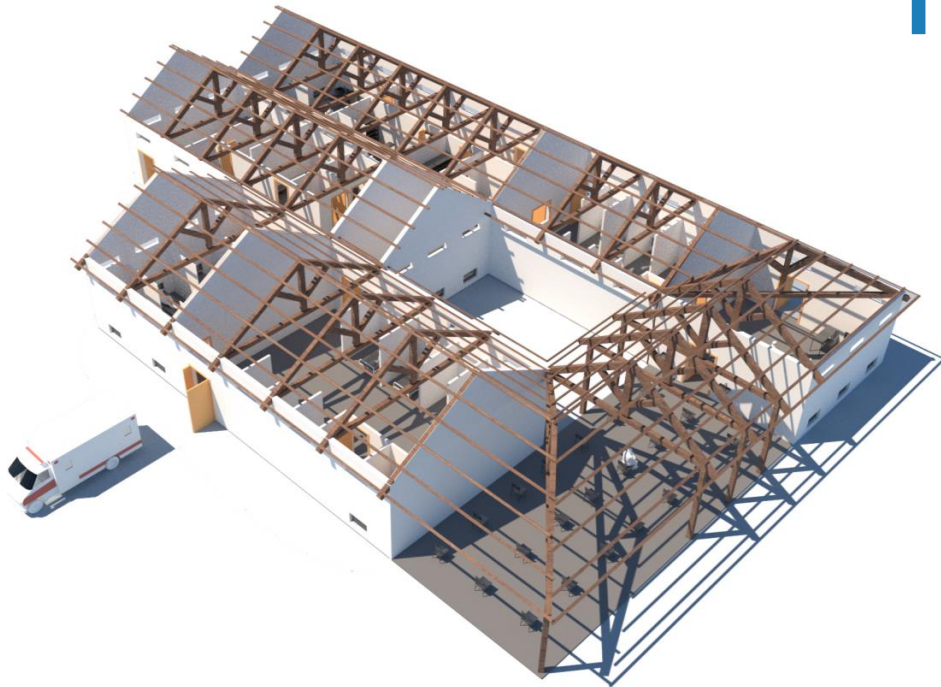
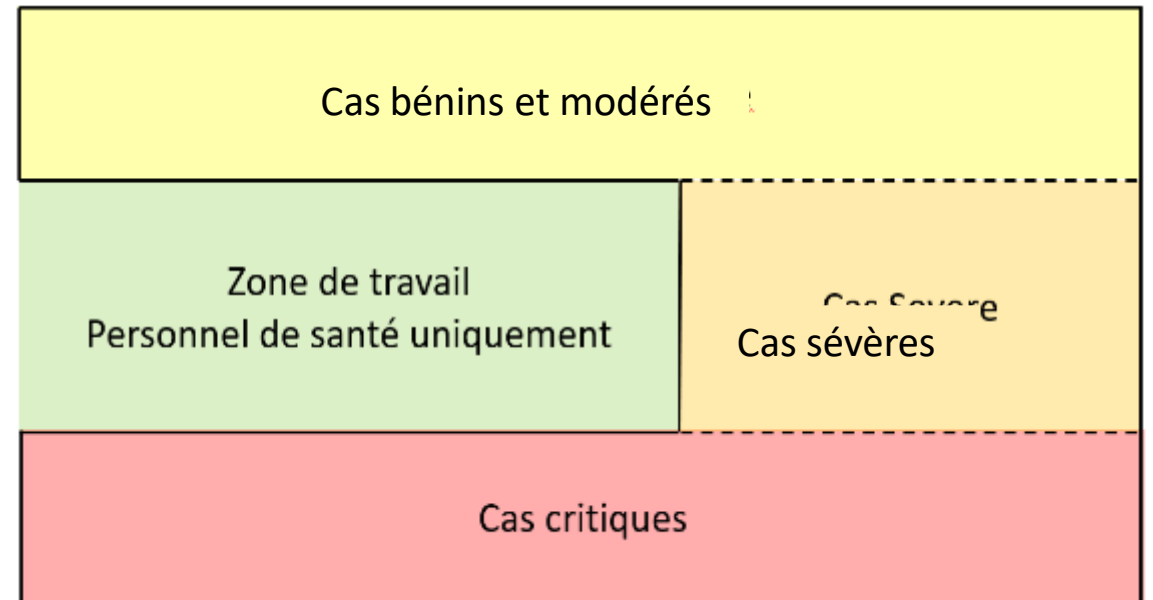
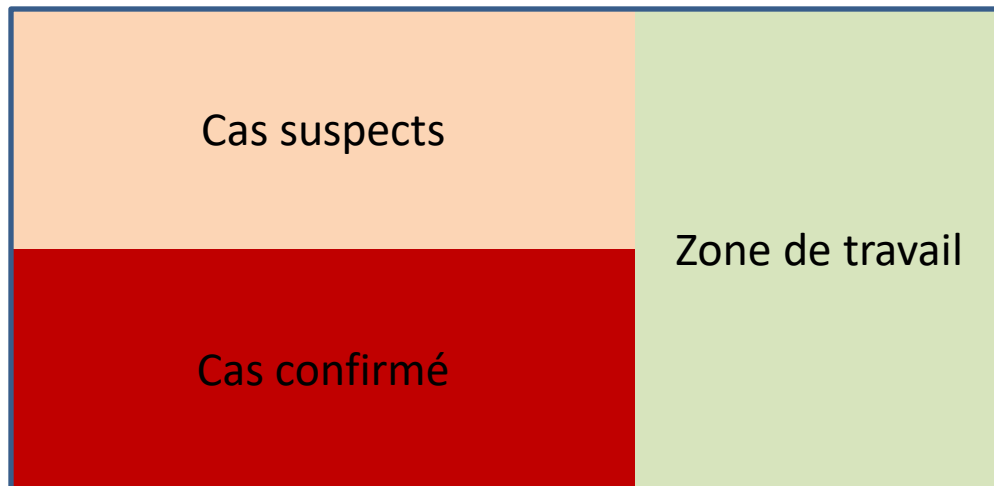


# INFECTION RESPIRATOIRE AIGÛE ET SÉVÈRE (IRAS)

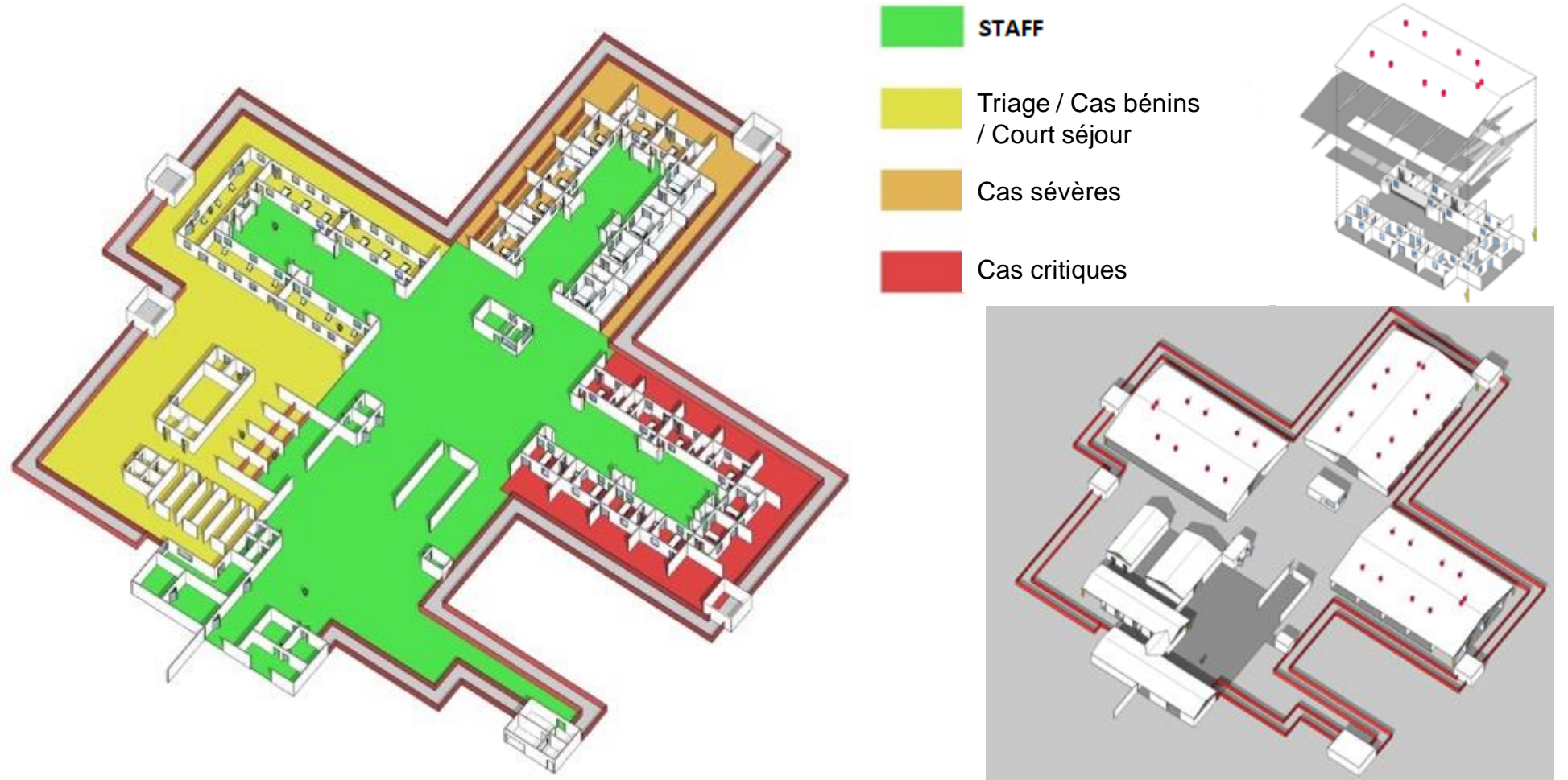
## CONCEPTION ET INSTALLATIONS DES CENTRES DE TRAITEMENT



# Principe de base de la disposition des structures

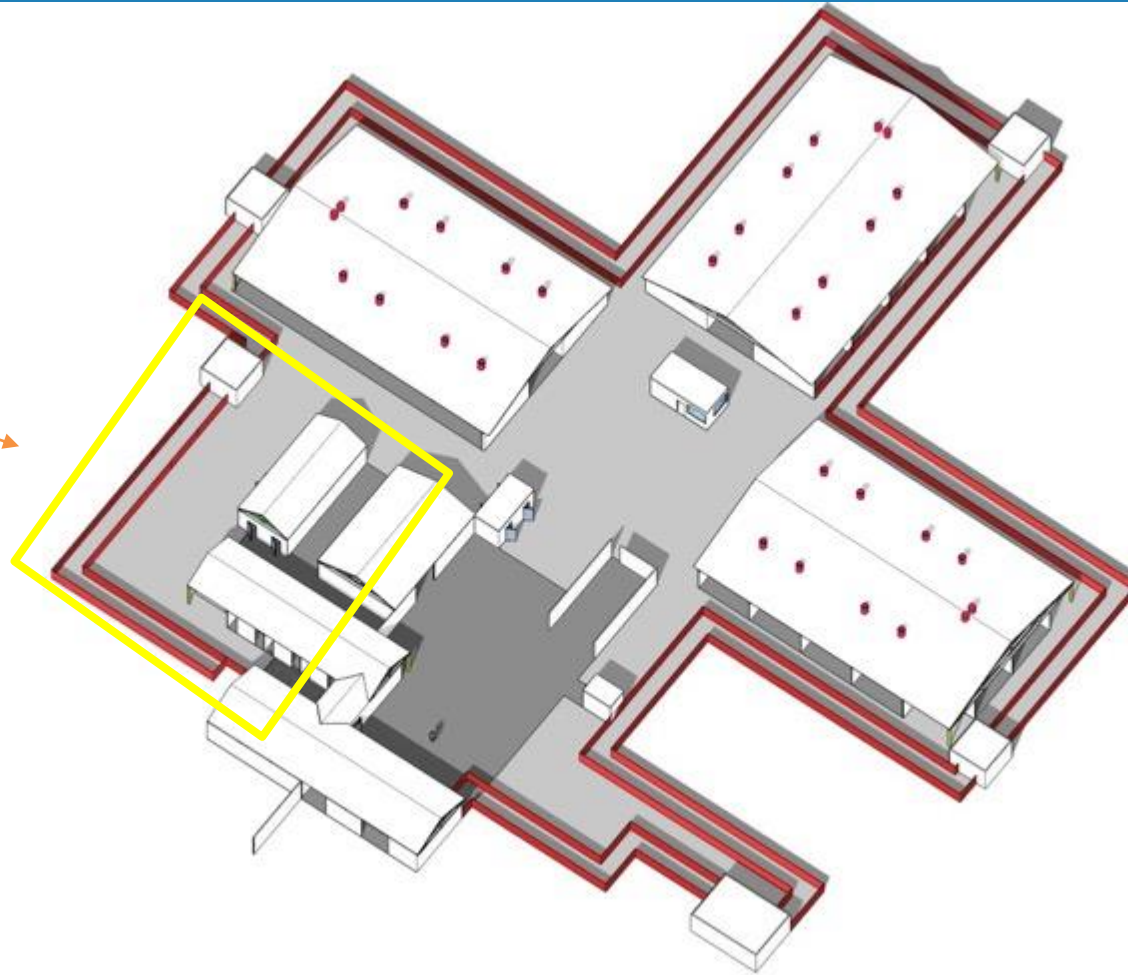


# Principe de base de la disposition des structures

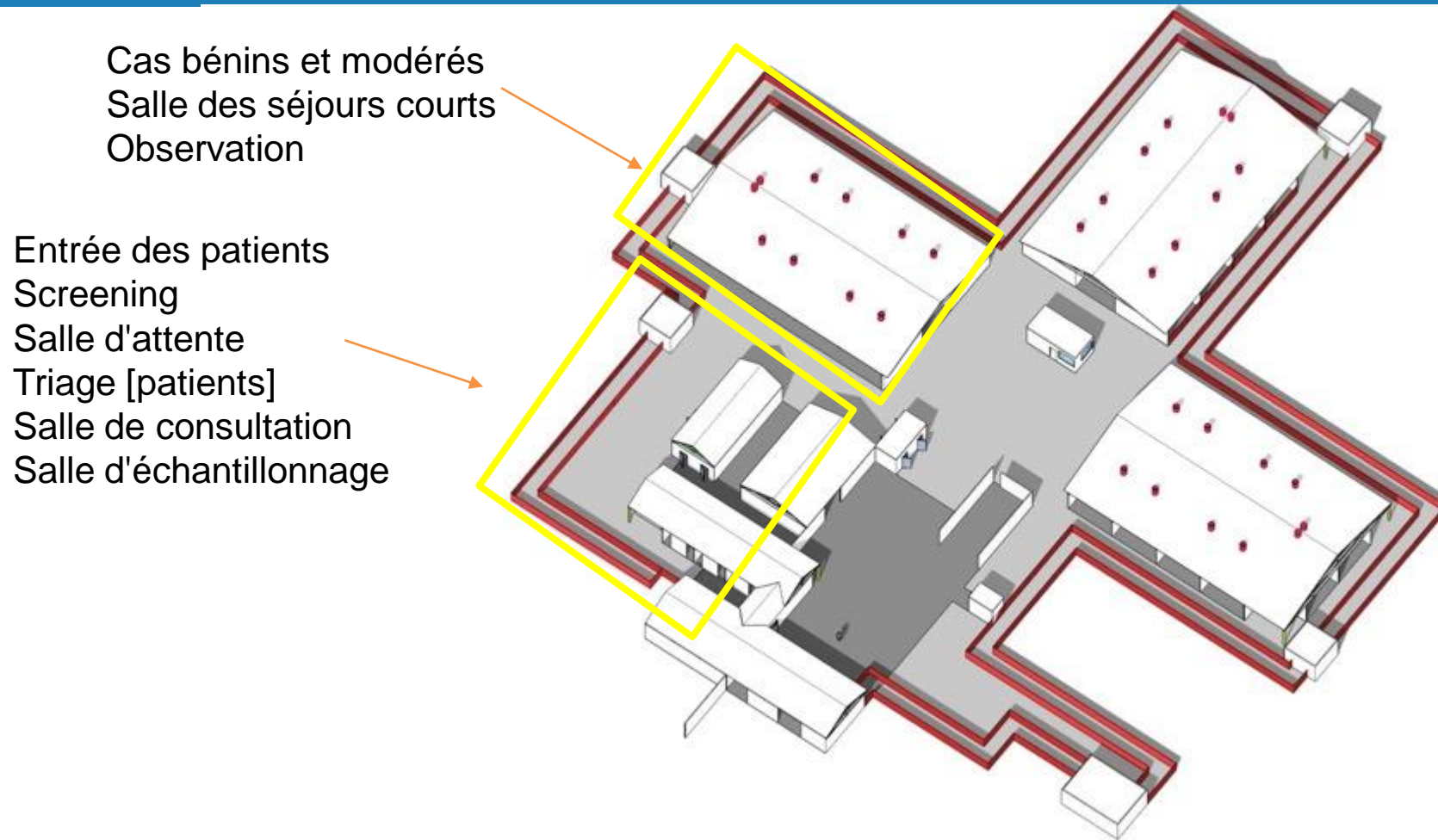


# Éléments clés

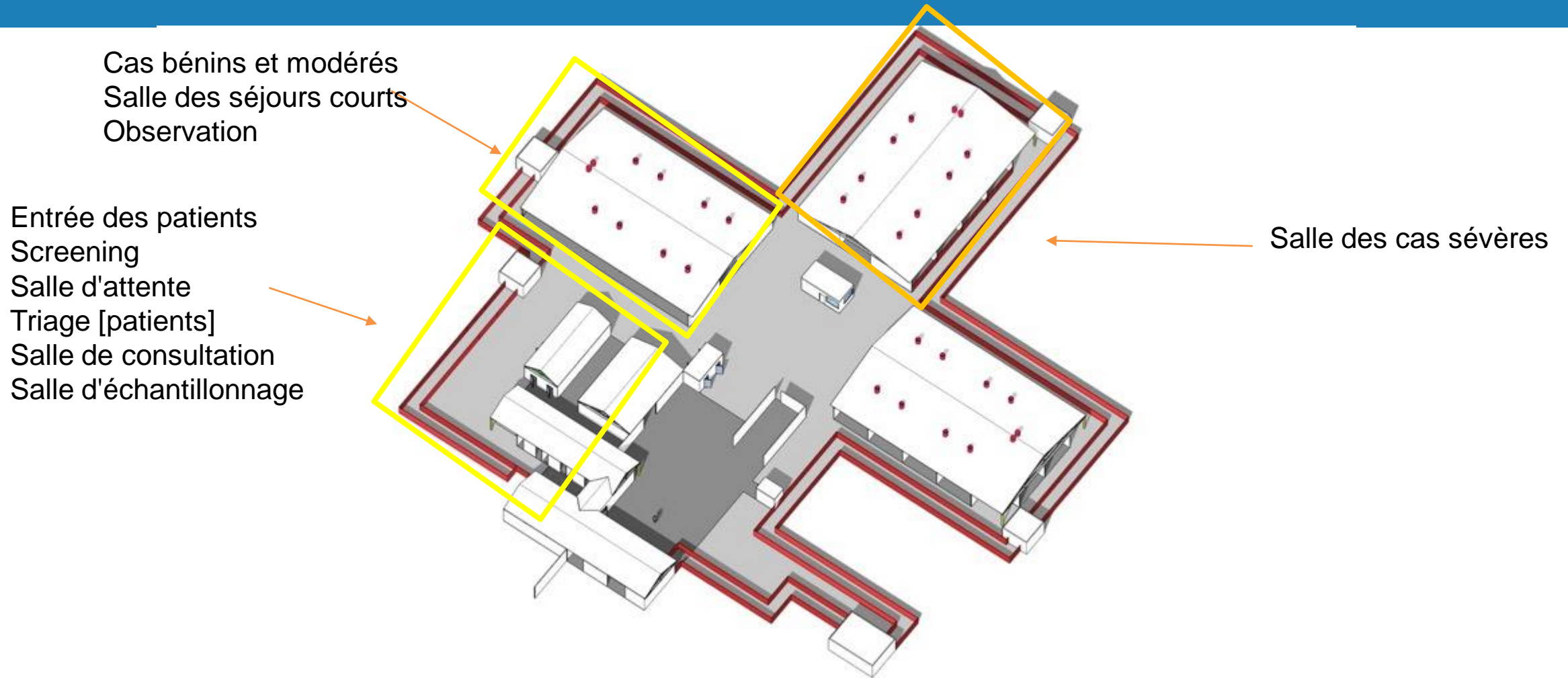
Entrée des patients  
Screening  
Salle d'attente  
Triage [patients]  
Salle de consultation  
Salle d'échantillonnage



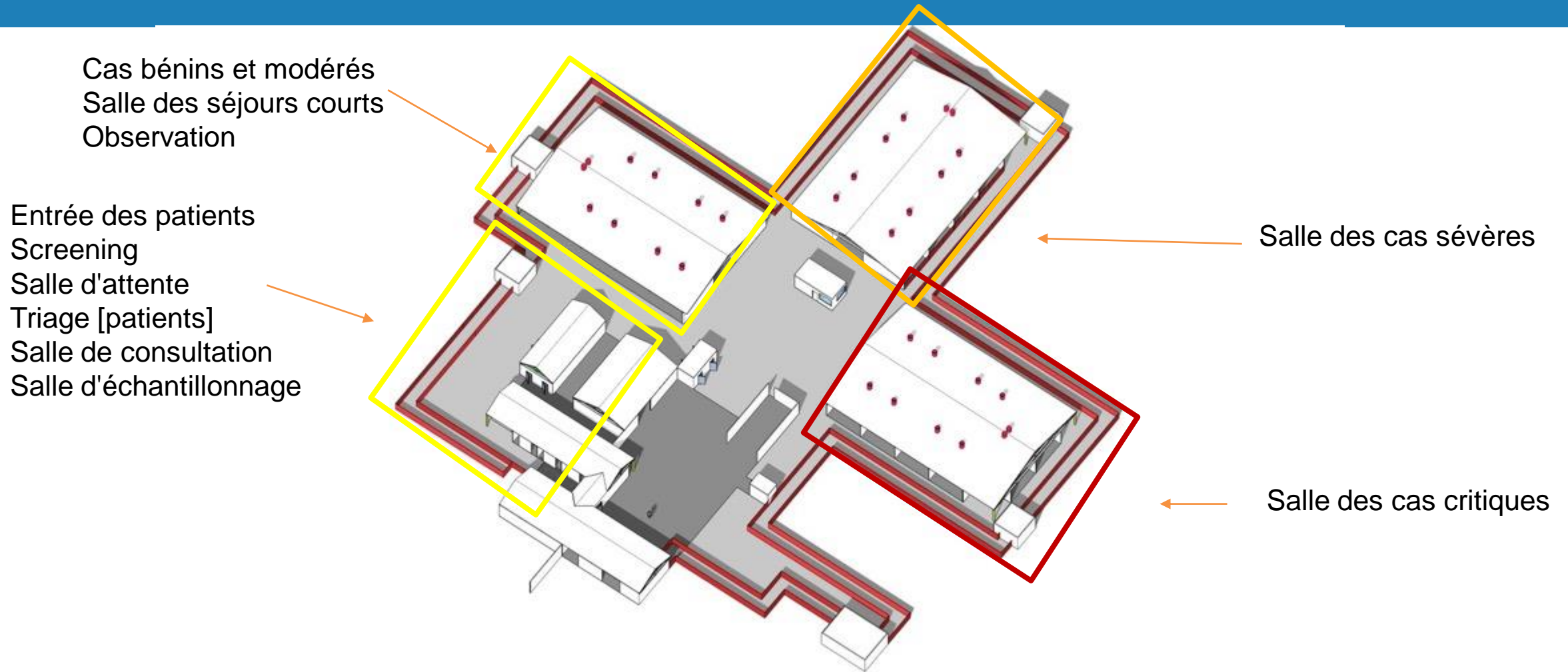
# Éléments clés



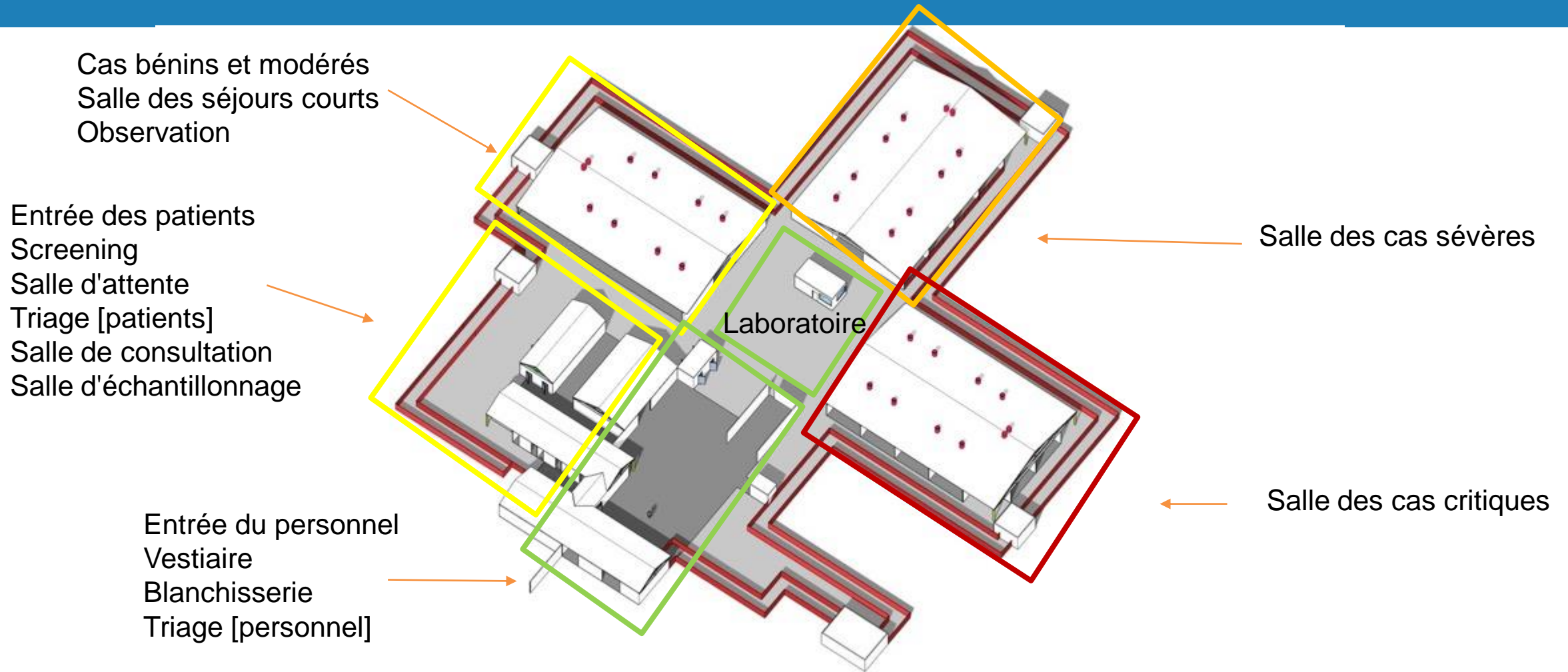
# Éléments clés



# Éléments clés

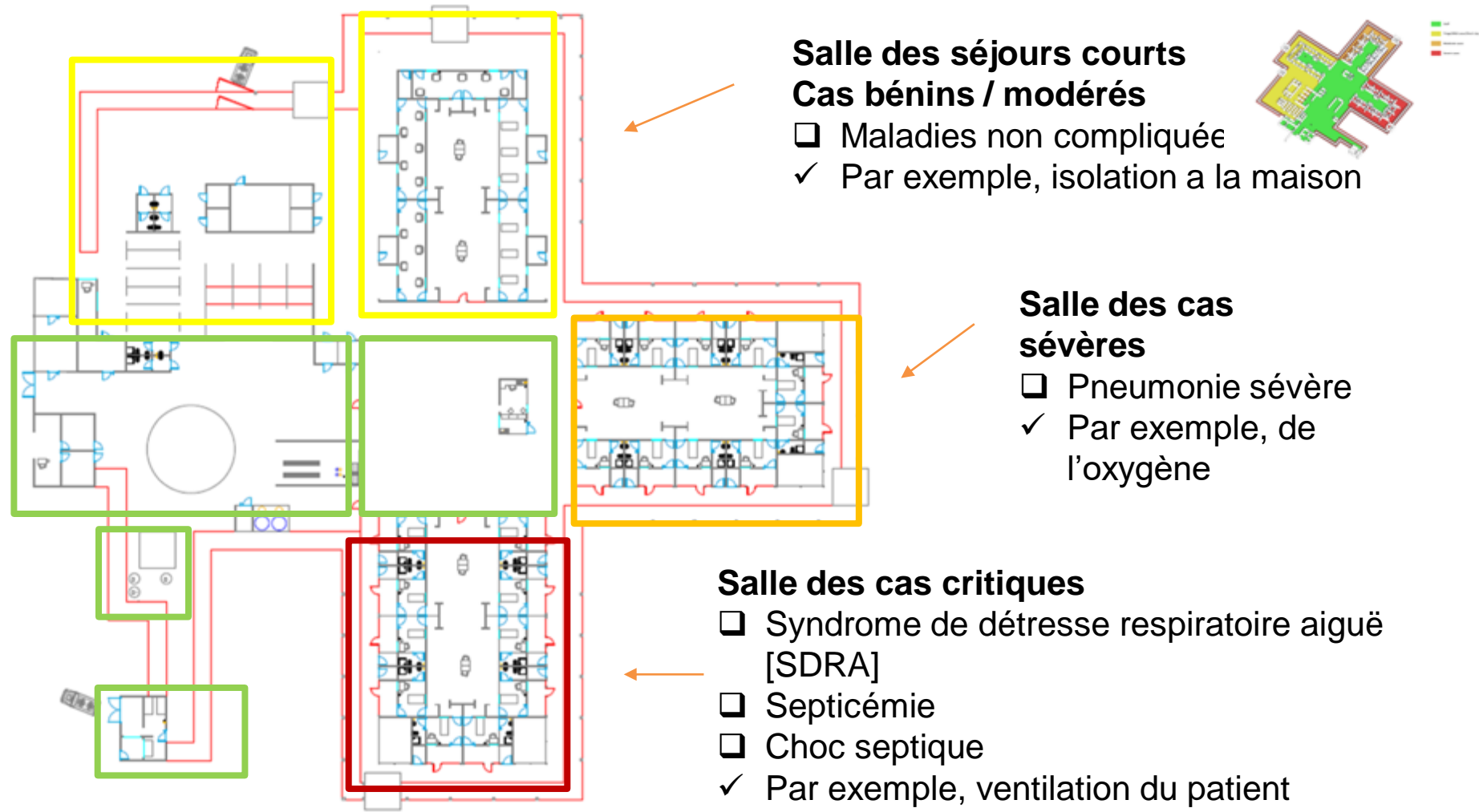


# Éléments clés

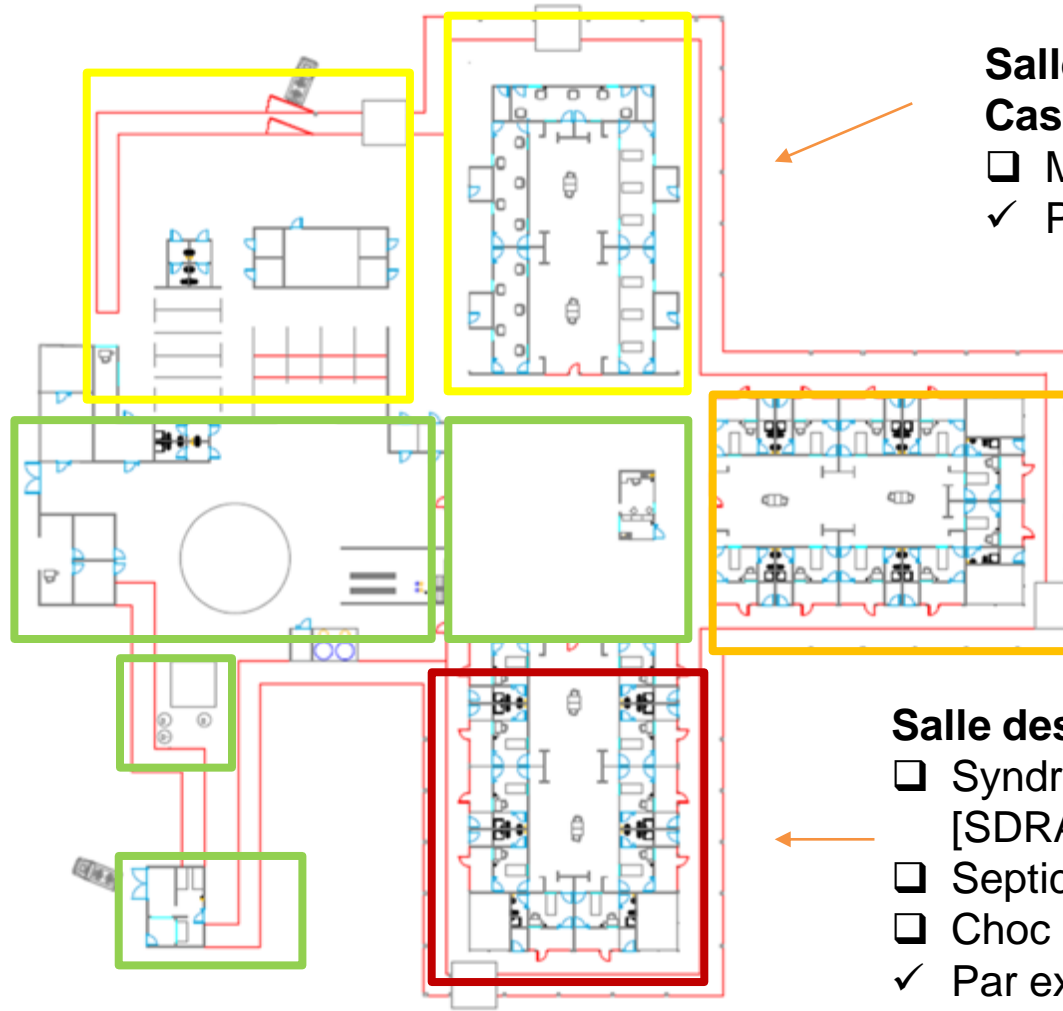




# Éléments clés - Gestion des cas



# Éléments clés - Gestion des cas



## Salle des séjours courts Cas bénins / modérés

- ❑ Maladies non compliquée
- ✓ Par exemple, isolation a la maison

## Salle des cas sévères

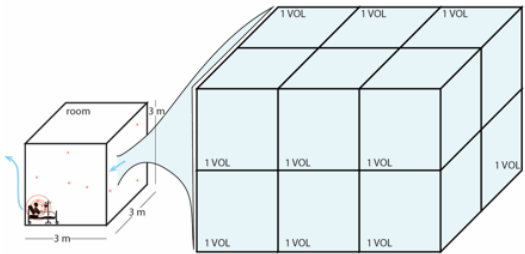
- ❑ Pneumonie sévère
- ✓ Par exemple, de l'oxygène

## Salle des cas critiques

- ❑ Syndrome de détresse respiratoire aiguë [SDRA]
- ❑ Septicémie
- ❑ Choc septique
- ✓ Par exemple, ventilation du patient

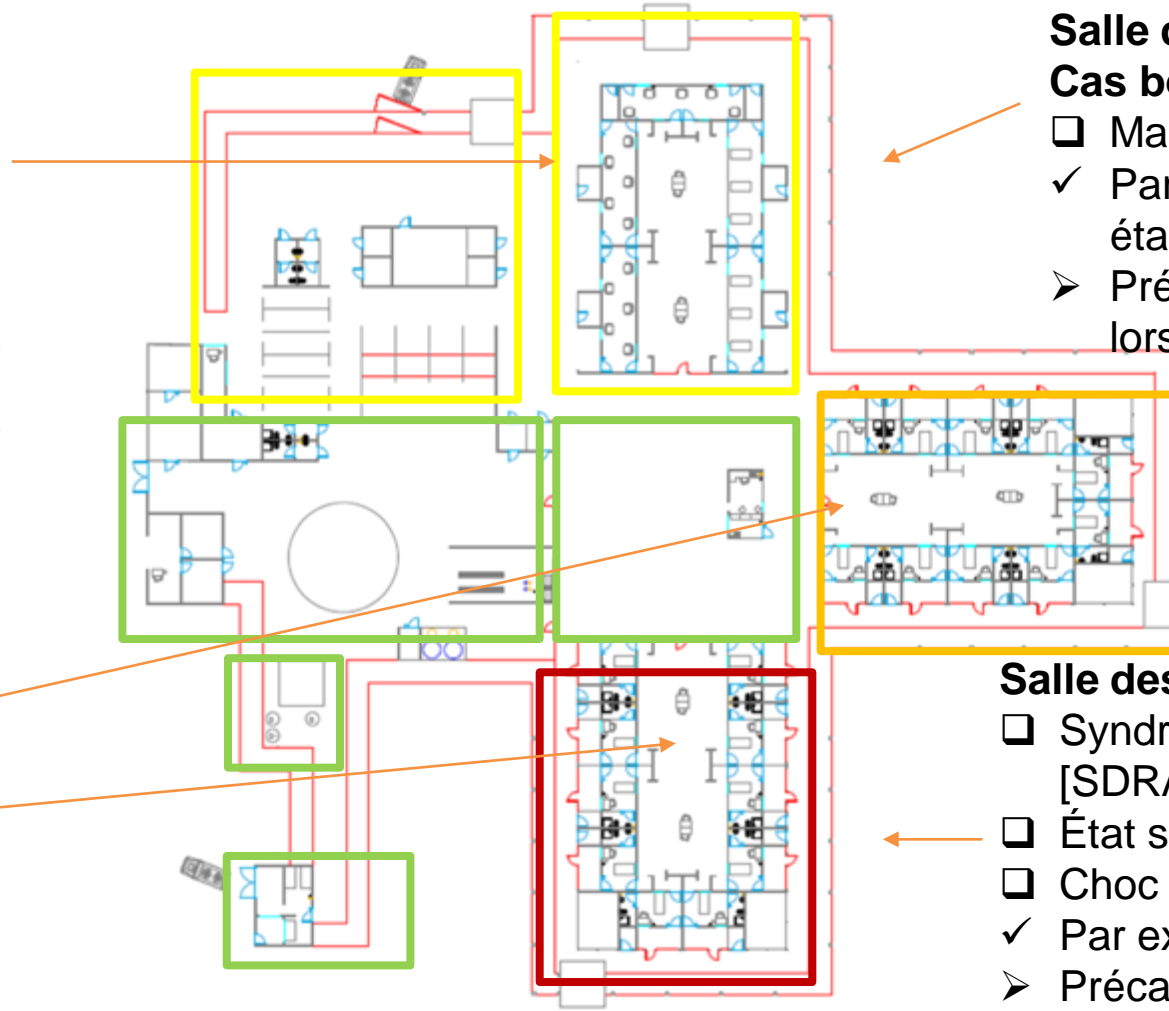
# Éléments clés - Mesures PCI / ingénierie

**Salle des séjours courts**  
**Cas bénin / cas modérés**  
au moins 60 l / s / patient



**Cas sévères**

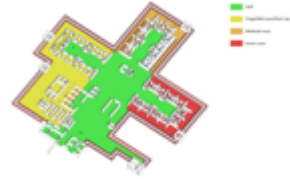
**Cas critiques**  
au moins 160 l / s / patient



**Salle des séjours courts**

**Cas bénins / modérés**

- Maladies non compliquées
- ✓ Par exemple, isolation / établissement communautaire
- Précautions contre les gouttelettes et lors de contact



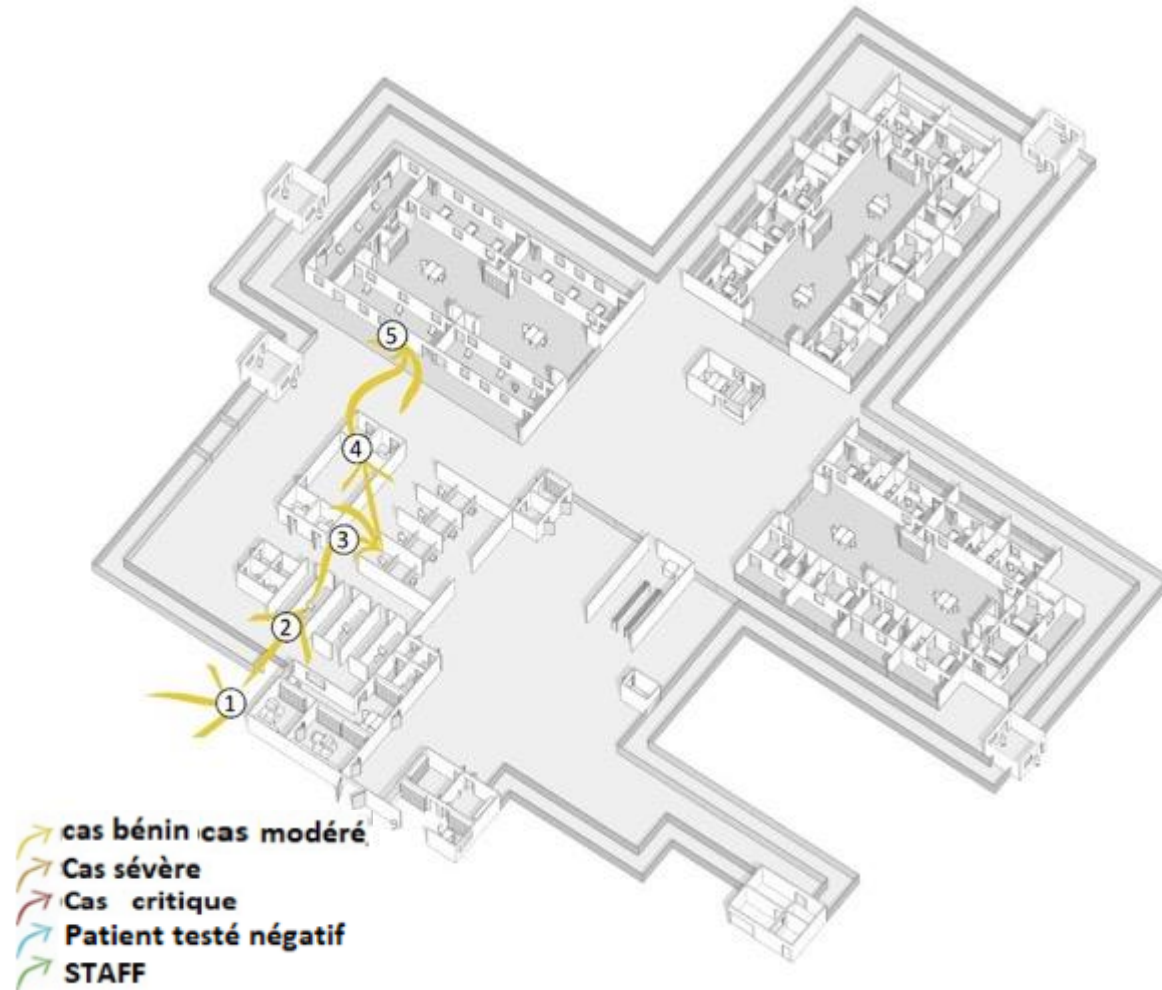
**Salle des cas sévères**

- Pneumonie sévère
- ✓ Par exemple, de l'oxygène
- Précautions aériennes et lors de contact

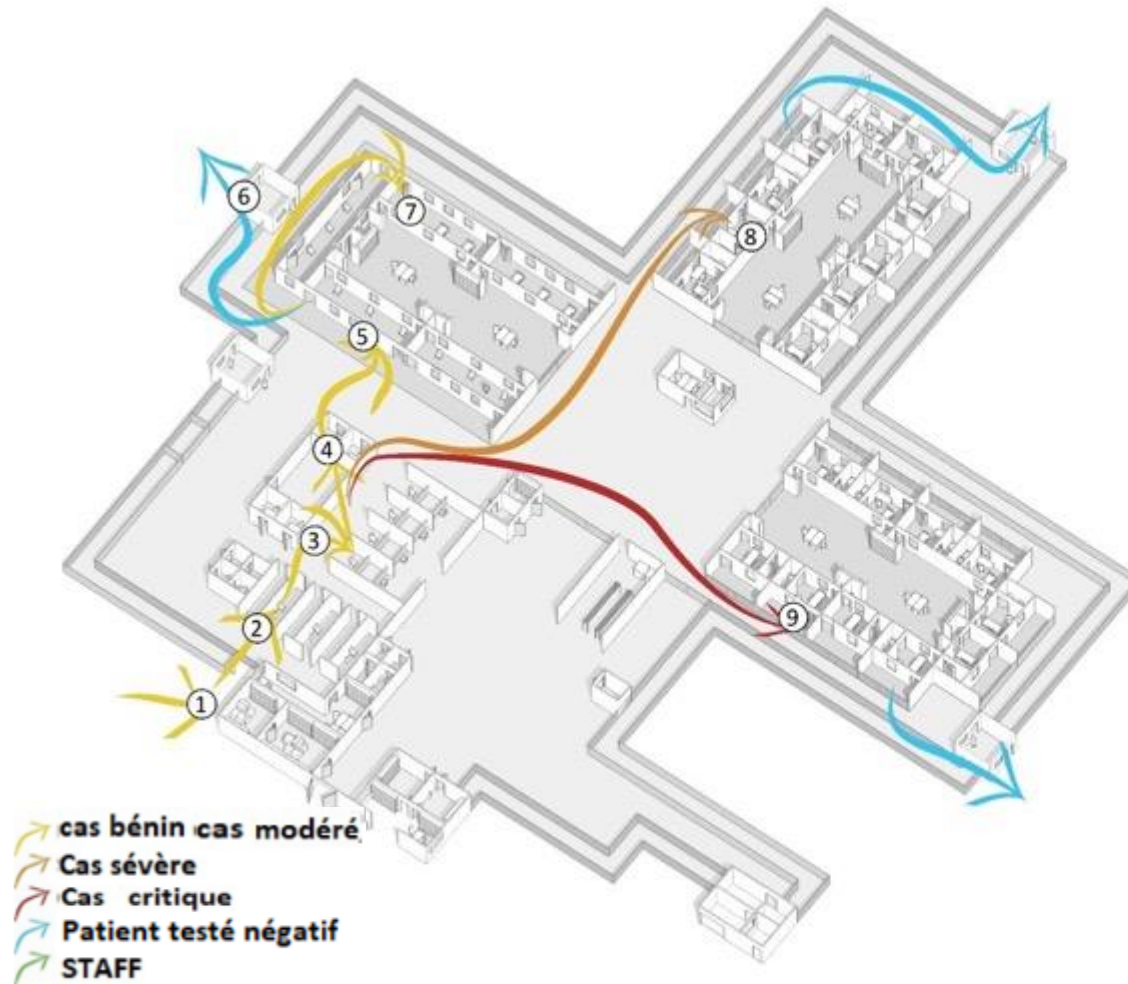
**Salle des cas critiques**

- Syndrome de détresse respiratoire aiguë [SDRA]
- État septique
- Choc septique
- ✓ Par exemple, la ventilation du patient
- Précautions aériennes et lors de contact

# Flux de patients



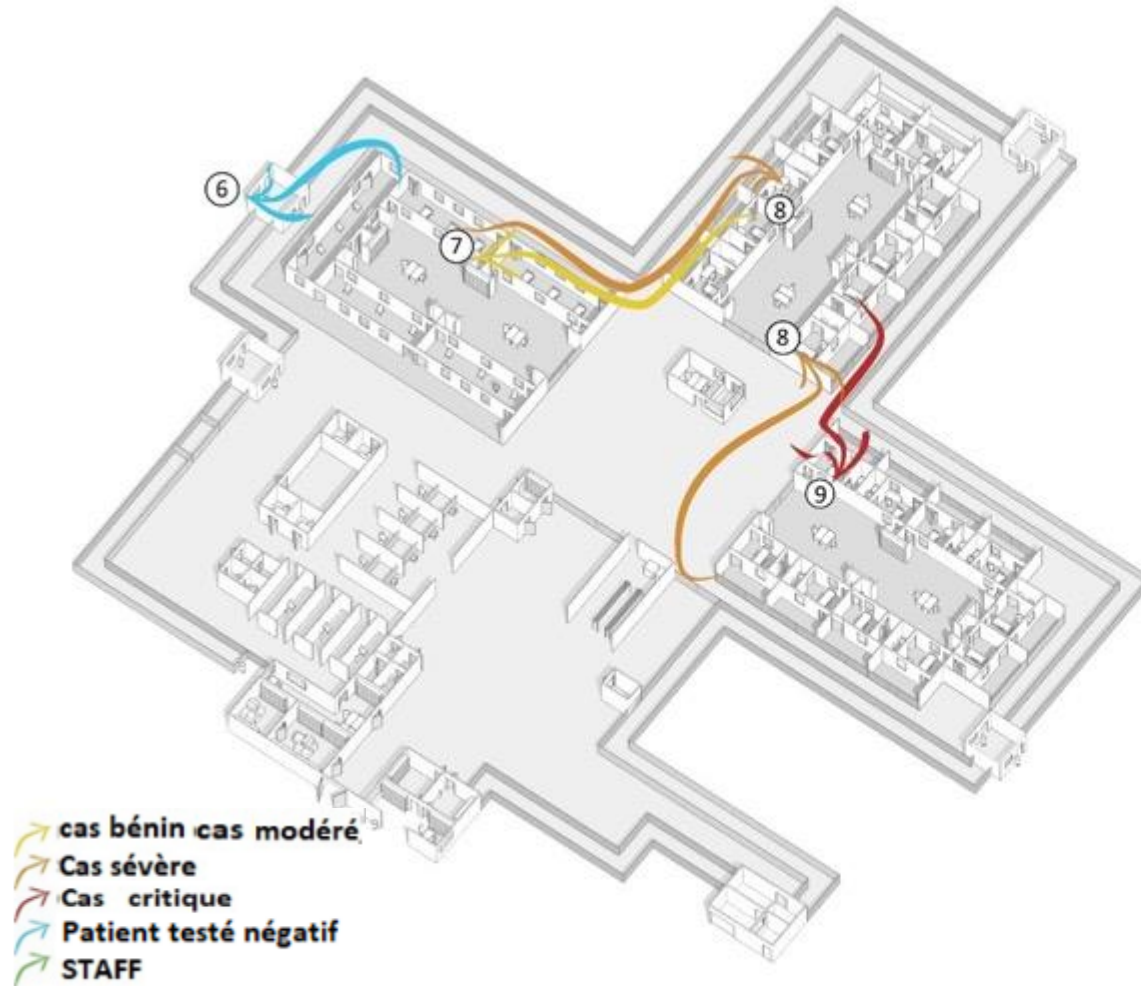
# Flux de patients



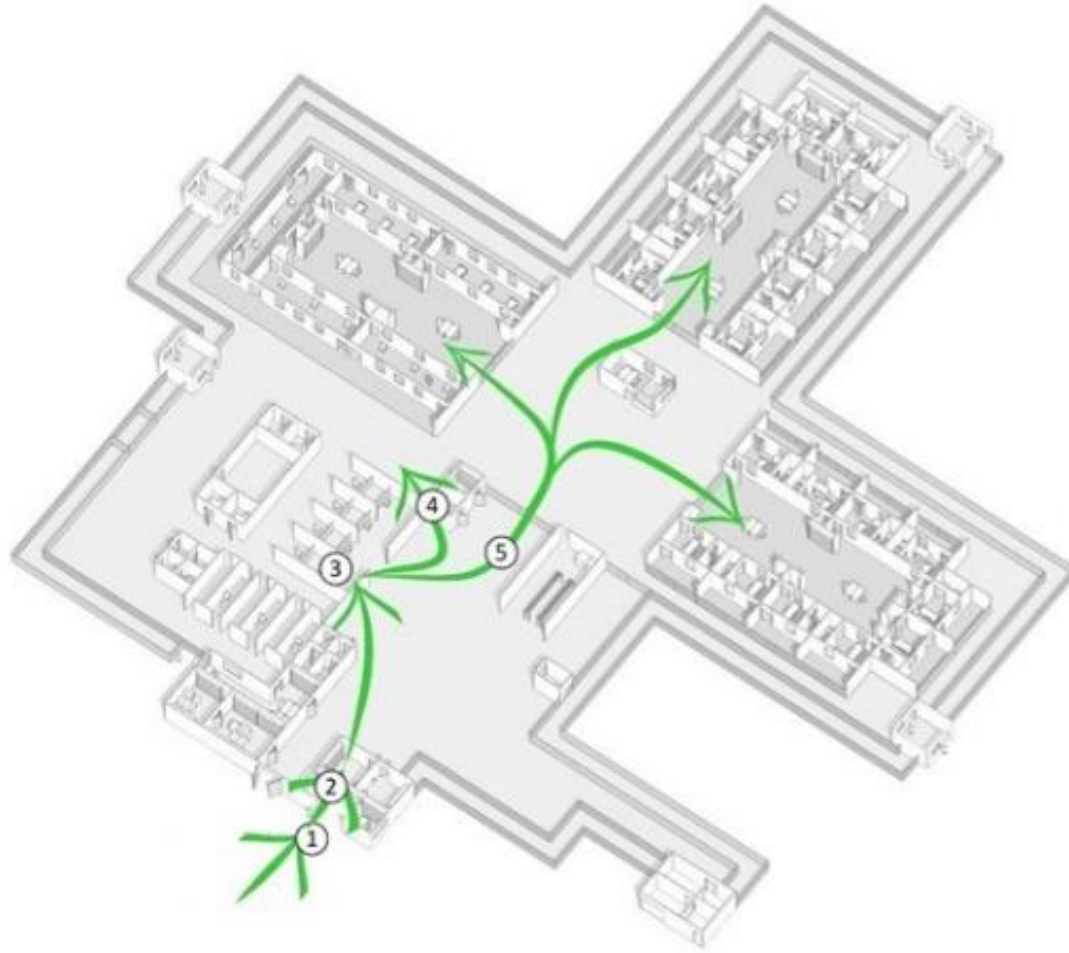
1. Screening
2. Triage
3. Consultation (clinical assessment)
4. Echantillon (ou pas)
5. Services d'hospitalisation
6. Décharge (négative ou guéri)

# Flux de patients - Aggravation et amélioration

Pas circuit unidirectionnel



# Flux du personnel



1. Entre personnels
2. Vestiaire
3. Triage
4. Salle habillage
5. Services d'hospitalisation

# Resources disponibles

## ***Centre de traitement des infections respiratoires aiguës sévères***

Manuel pratique pour créer et gérer un centre de traitement du SRAS et un centre de détection du SRAS dans les centres de santé

[https://apps.who.int/iris/bitstream/handle/10665/331756/WHO-2019-nCoV-SARI\\_treatment\\_center-2020.1-fre.pdf](https://apps.who.int/iris/bitstream/handle/10665/331756/WHO-2019-nCoV-SARI_treatment_center-2020.1-fre.pdf)

## **Cours en ligne sur la conception des installations de traitement des infections respiratoires aiguës sévères (SARI)**

une compréhension complète des principes qui guident le processus de conception de la zone de dépistage du COVID-19 pour les établissements de santé, les établissements communautaires et les centres de traitement du IRAS, y compris comment adapter un bâtiment existant en centre de traitement IRAS.

<https://openwho.org/courses/Installations-IRAS>

## **SARI facilities Helpdesk**



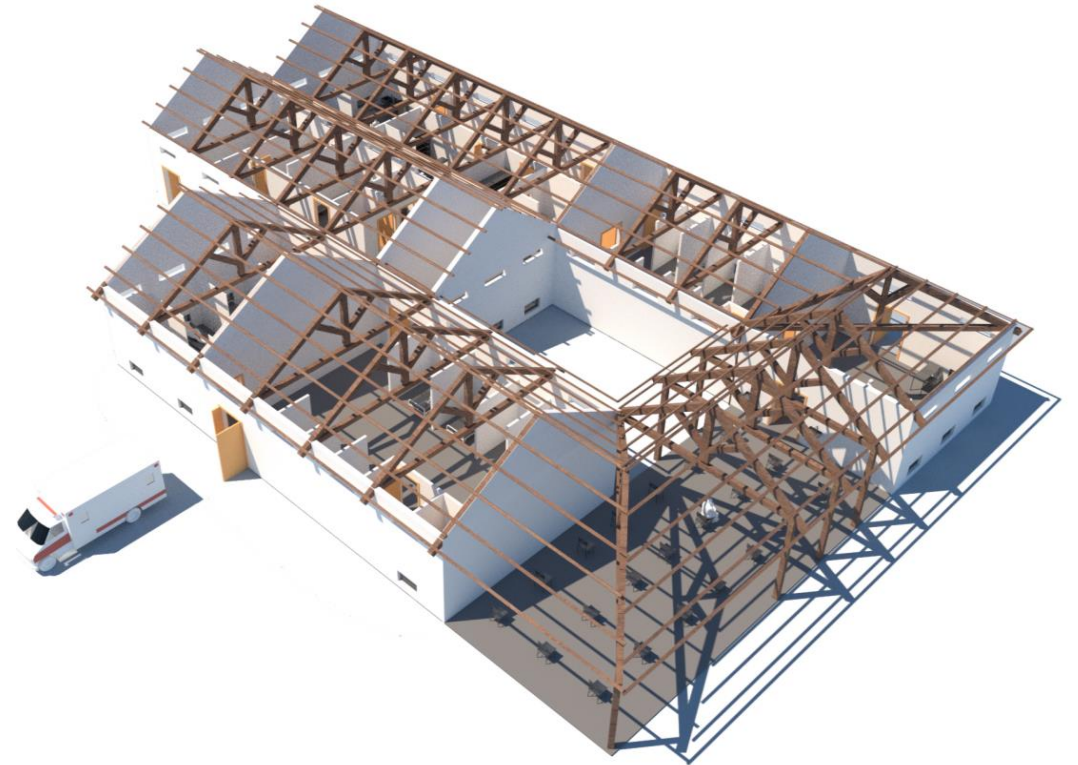
# HelpDesk

The helpdesk fournit un support technique pour :

- Construction d'une nouvelle structure pour le COVID-19
- Réaménagement du bâtiment existant en installation COVID-19
- Soutien ad-hoc (établissements de centre de dépistage, screening, camps de déplacés, etc.

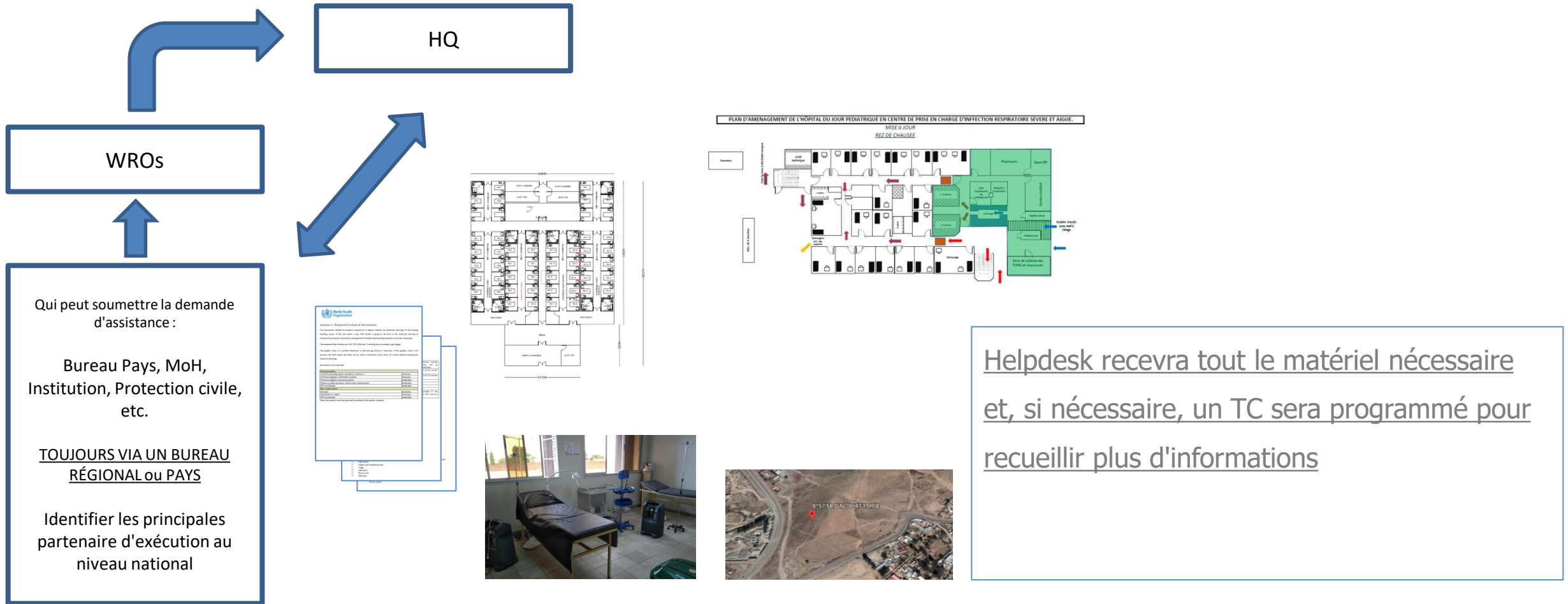
Support

- Dessin technique - CAD
- Images et vidéos 3D
- Recommandations pour la gestion du centre



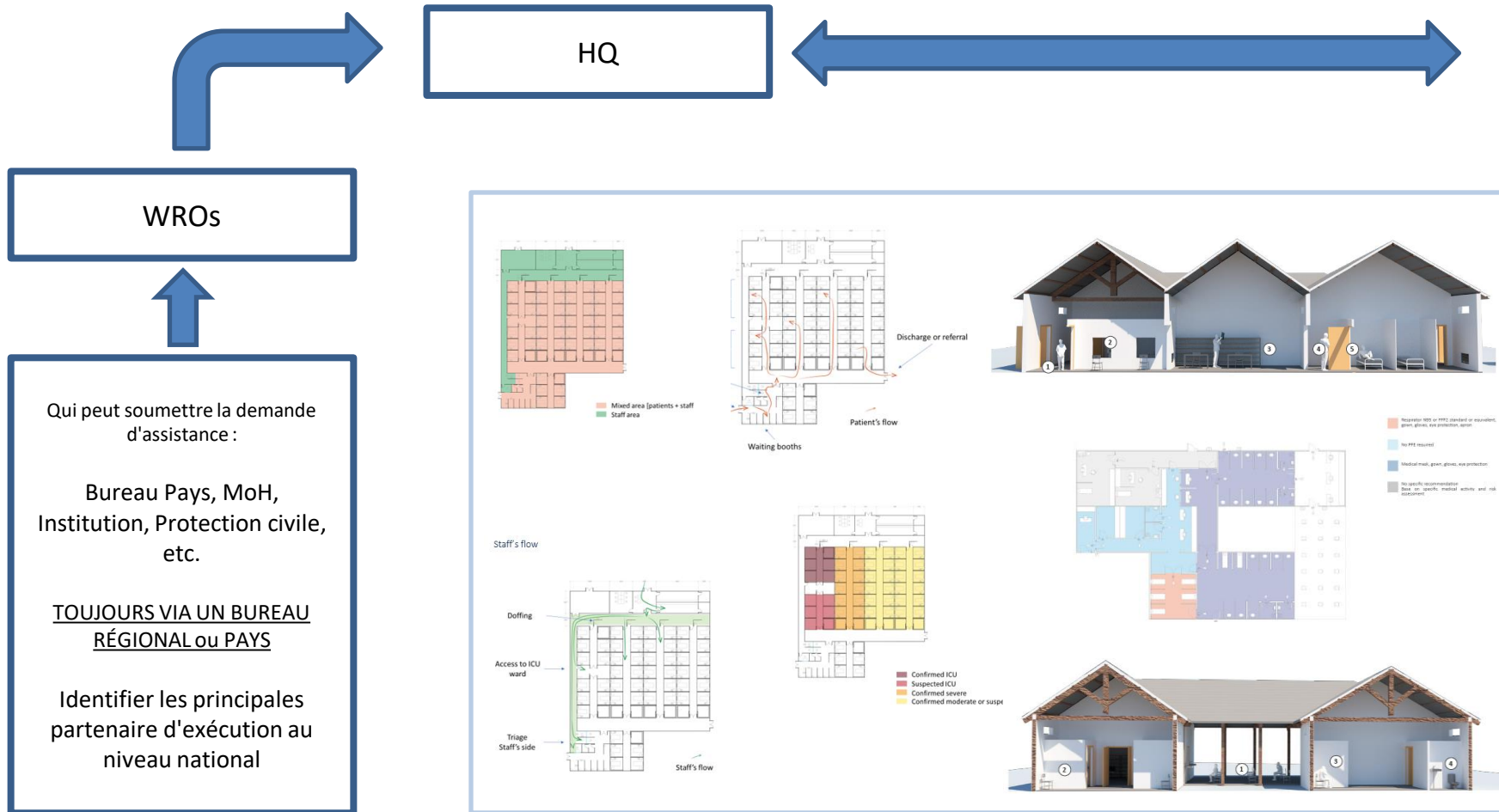
# Helpdesk modèle de travail

## Documents techniques et informations nécessaires



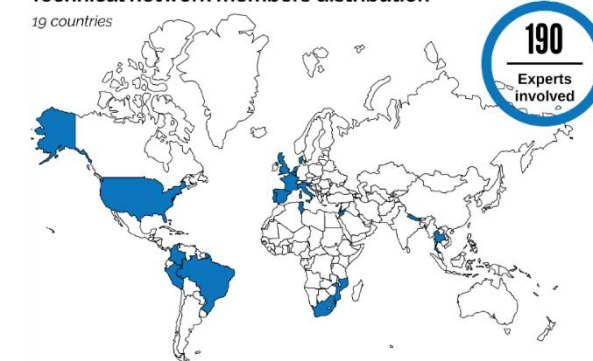
# Helpdesk modele de travail

## Collaboration entres les acteurs



Technical network members distribution

19 countries



HQ collaborera avec des universités pour développer une proposition final pour le requêteur incluant aussi les dessins techniques et le manuel pour la gestion du centre

# Helpdesk working model

## HQ partage les documents avec COs and ROs

**World Health Organization**

### COVID-19 Helpdesk

General disclaimer. The designations employed and the presentation of the material in this publication do not imply the expression of any opinion whatsoever on the part of WHO concerning the legal status of any country, territory, city or area or of its authorities, or concerning the delimitation of its frontiers or boundaries. Colored and shaded lines or maps represent approximate border lines for which there may not yet be full agreement.

The mention of specific companies or of certain manufacturer products does not imply that they are endorsed or recommended by WHO in preference to others of a similar nature that are not mentioned. Drugs and medicines mentioned, the names of proprietary products are designated by their generic name.

All measurable quantities have been taken by WHO to verify the information contained in this publication. However, the published material is being distributed without warranty of any kind, either expressed or implied. The responsibility for the interpretation and use of the material lies with the reader. In no event shall WHO be liable for damages arising from its use.

Agreement between request applicant and WHO. This report as well as all annexes, documents are offered to you confidential, on your acceptance without modification of the terms, conditions, and notices contained herein. Your use of the report and technical documents constitutes your agreement to all such terms, conditions, and notices.

Disclaimer about Information Accuracy. Although every effort has been made to provide complete and accurate information, WHO makes no warranties, express or implied, or representations as to the accuracy or content of the information provided in all recommendations, illustrations and related measures are based on information provided by the applicant. WHO assumes no liability or responsibility for any error or omissions in the information contained in the provided documents.

---

**General information**

Request: 8F8200420  
 Institution: WHO  
 Contact persons: Mawaddou Zongo; WHO  
 Phone & mail: zongm@who.int  
 Building: Exo  
 City: Bobo-Dioulasso  
 Reception date: 20/04/2020  
 Delivering date: 26/04/2020  
 Technical file: pdf plan, site photos

---

**Designers**

Institution: Name of institution  
 Country: Name of the country  
 City: Name of the city

---

**Drawings**

Contents: Ground floor Plan sheet  
 Scale: 1:100

02

**World Health Organization**

### COVID-19 Helpdesk

General disclaimer. The designations employed and the presentation of the material in this publication do not imply the expression of any opinion whatsoever on the part of WHO concerning the legal status of any country, territory, city or area or of its authorities, or concerning the delimitation of its frontiers or boundaries. Colored and shaded lines or maps represent approximate border lines for which there may not yet be full agreement.

The mention of specific companies or of certain manufacturer products does not imply that they are endorsed or recommended by WHO in preference to others of a similar nature that are not mentioned. Drugs and medicines mentioned, the names of proprietary products are designated by their generic name.

All measurable quantities have been taken by WHO to verify the information contained in this publication. However, the published material is being distributed without warranty of any kind, either expressed or implied. The responsibility for the interpretation and use of the material lies with the reader. In no event shall WHO be liable for damages arising from its use.

Agreement between request applicant and WHO. This report as well as all annexes, documents are offered to you confidential, on your acceptance without modification of the terms, conditions, and notices contained herein. Your use of the report and technical documents constitutes your agreement to all such terms, conditions, and notices.

Disclaimer about Information Accuracy. Although every effort has been made to provide complete and accurate information, WHO makes no warranties, express or implied, or representations as to the accuracy or content of the information provided in all recommendations, illustrations and related measures are based on information provided by the applicant. WHO assumes no liability or responsibility for any error or omissions in the information contained in the provided documents.

---

**General information**

Request: 8F8200420  
 Institution: WHO  
 Contact persons: Mawaddou Zongo; WHO  
 Phone & mail: zongm@who.int  
 Building: Exo  
 City: Bobo-Dioulasso  
 Reception date: 20/04/2020  
 Delivering date: 26/04/2020  
 Technical file: pdf plan, site photos

---

**Designers**

Institution: Name of institution  
 Country: Name of the country  
 City: Name of the city

---

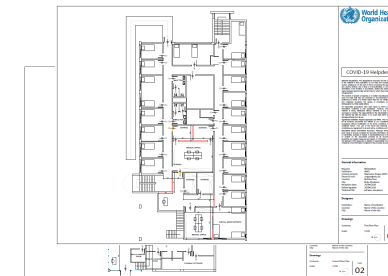
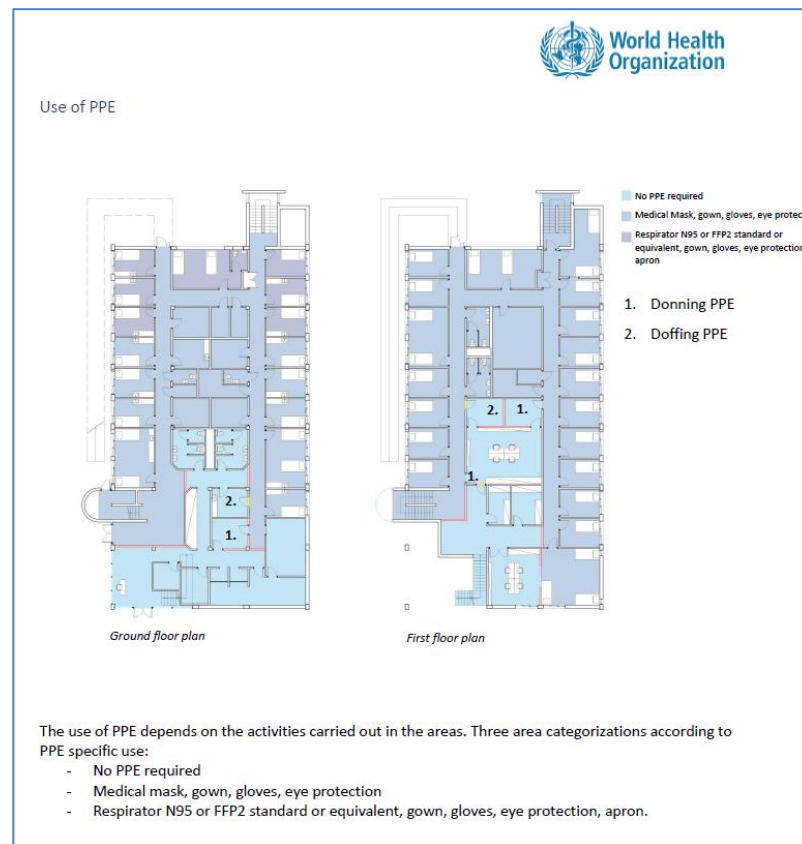
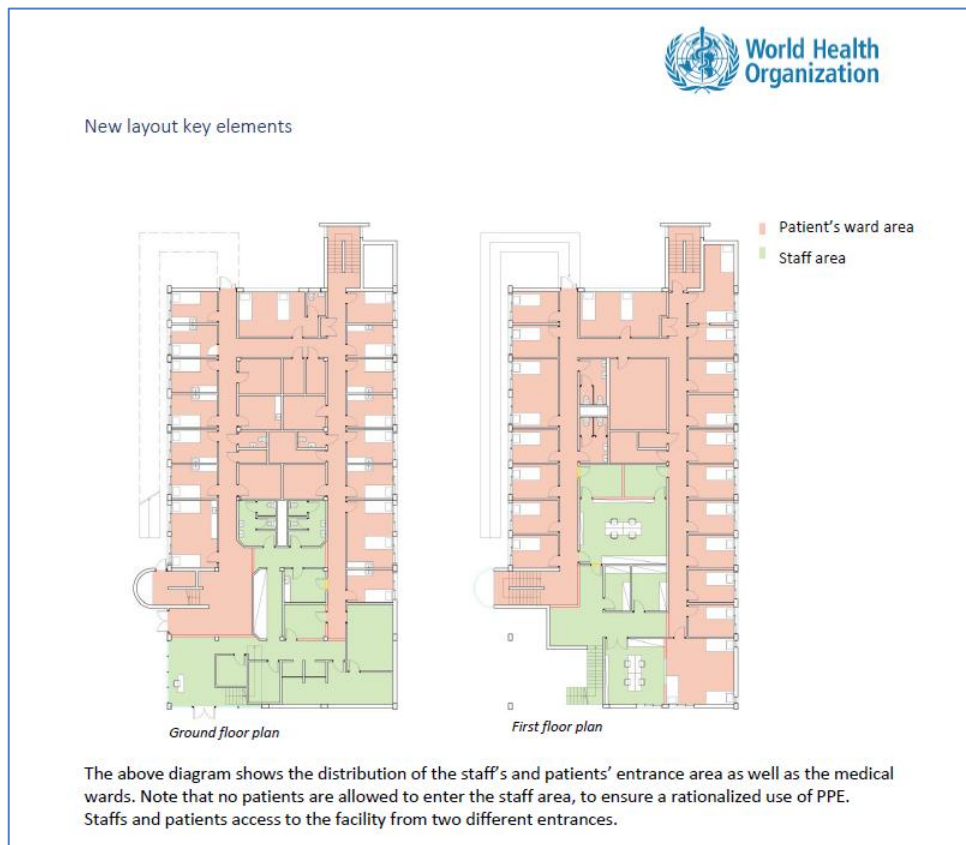
**Drawings**

Contents: First floor Plan sheet  
 Scale: 1:100

03

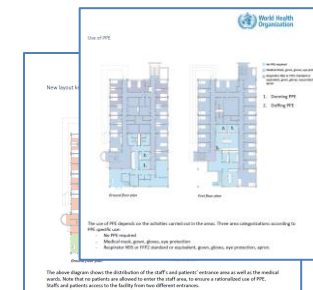
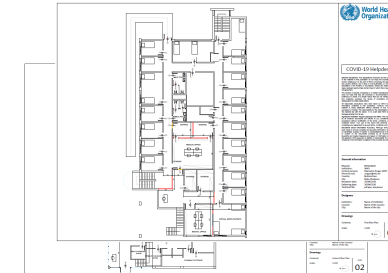
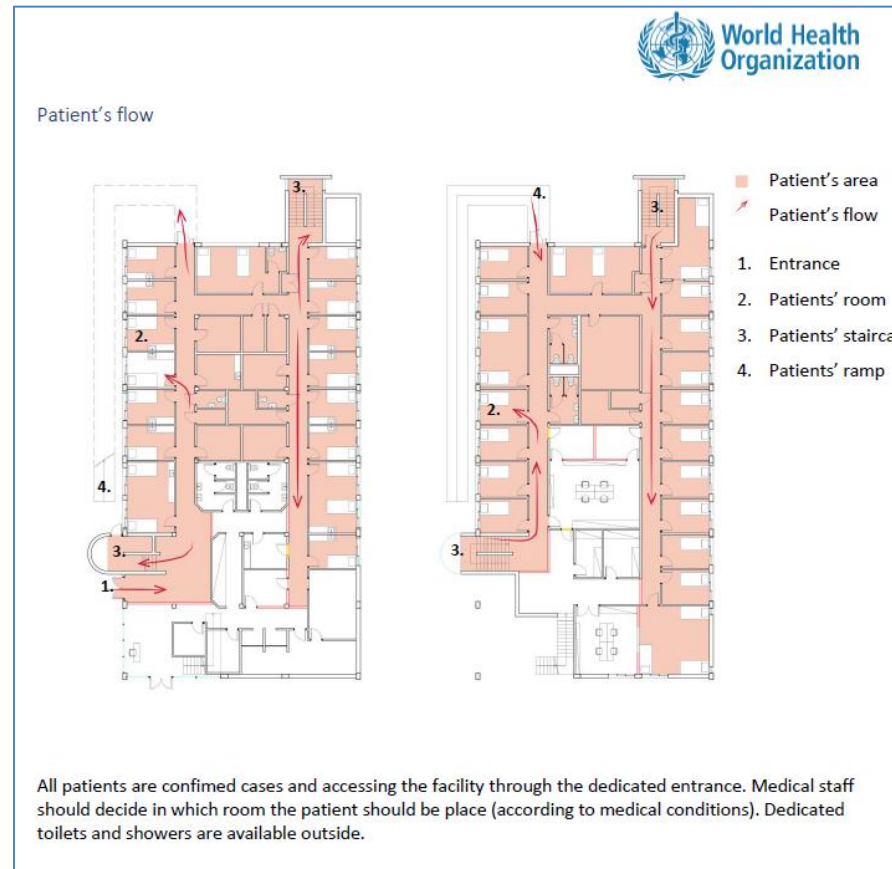
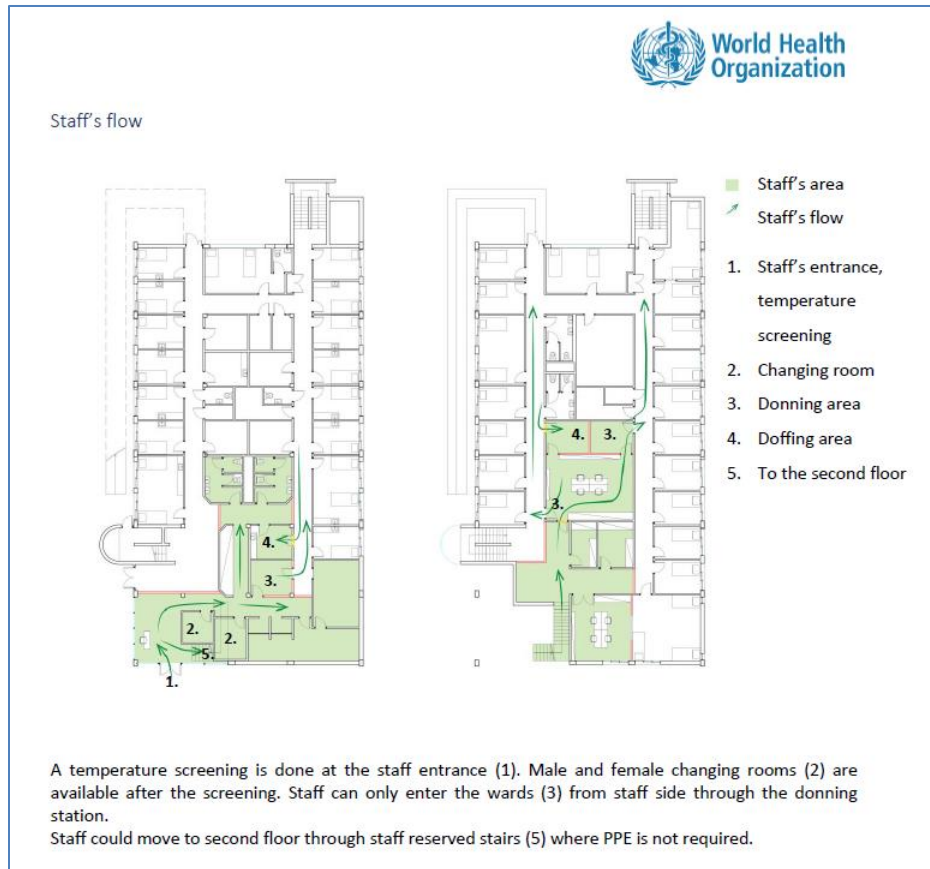
# Helpdesk working model

## HQ partage les documents avec COs and ROs



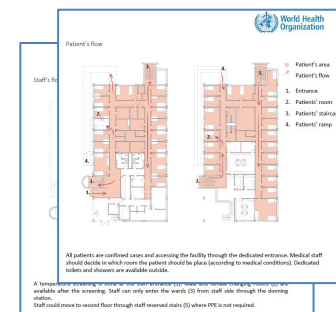
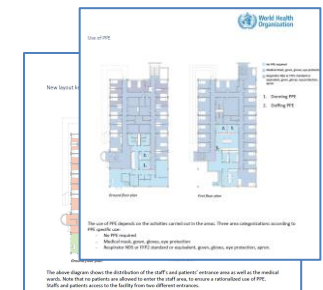
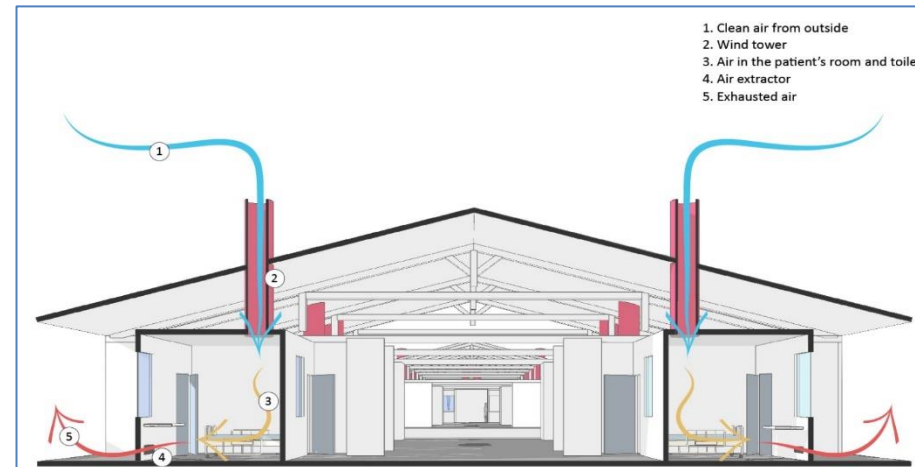
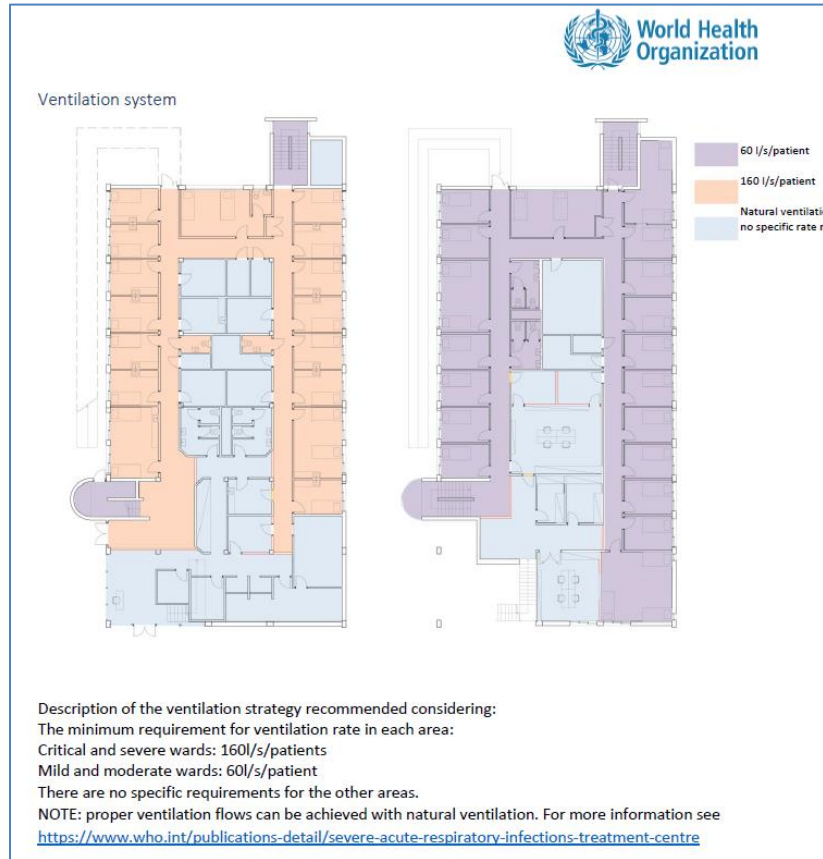
# Helpdesk working model

## HQ partage les documents avec COs and ROs



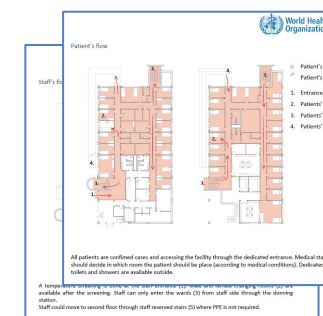
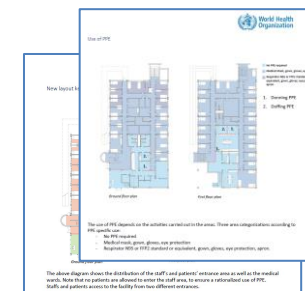
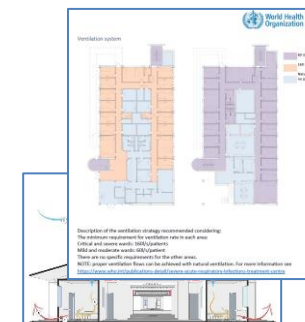
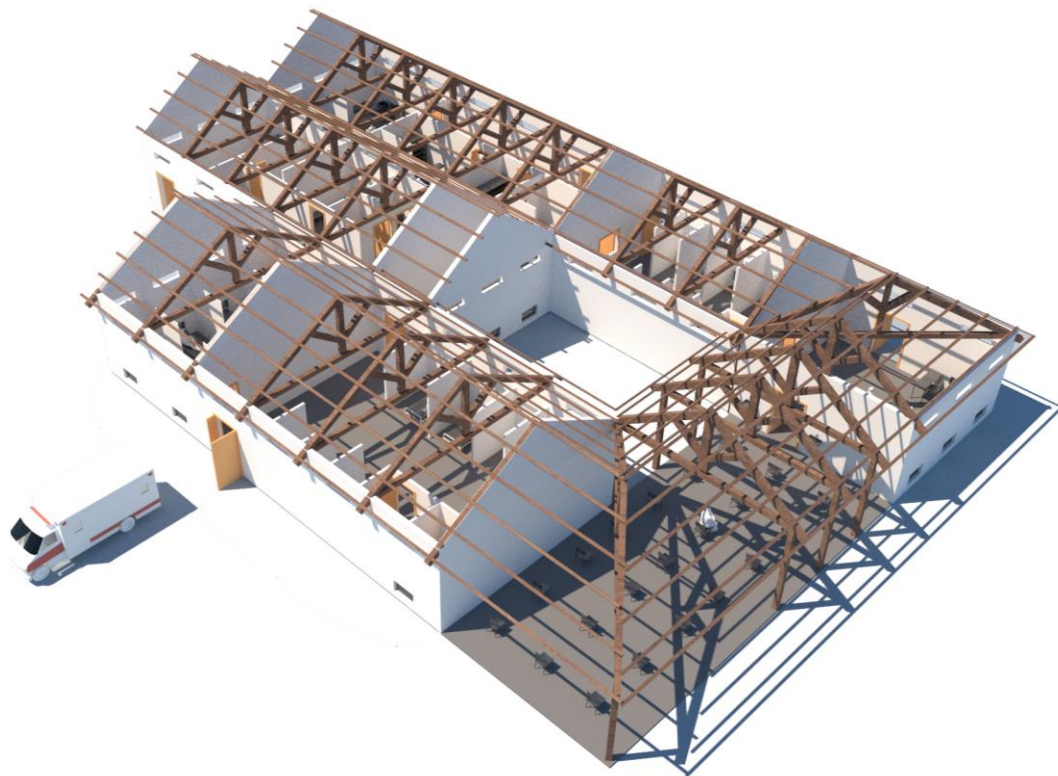
# Helpdesk working model

## HQ partage les documents avec COs and ROs



# Helpdesk working model

## HQ partage les documents avec COs and ROs





# Ad-hoc support

**Pour plus d'informations, pour soumettre des demandes d'assistance ou pour planifier un webinaire :**

**[oslhealthtech@who.int](mailto:oslhealthtech@who.int)**

**[fontanal@who.int](mailto:fontanal@who.int)**